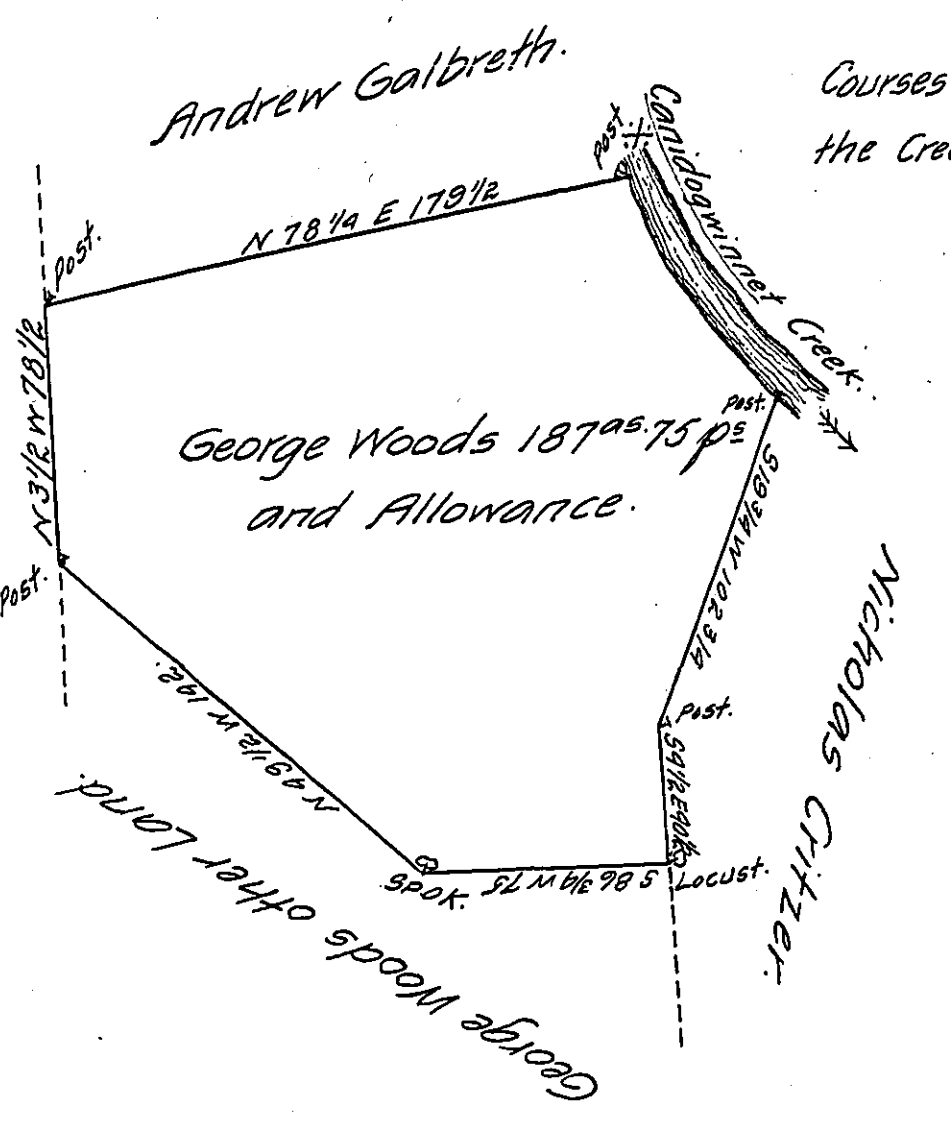


Land in dispute betwixt the Heirs
of James Galbreth and George Woods.



Courses and distances down
the Creek from the post *

- S 89 E — 45
 - S 38 E — 30
 - S 51 E — 5 1/2
- }
to a Post

The Draught of a Tract of Land situate in East Pennsbor-
ough Township Cumberland County Containing one hundred
and eighty seven Acres and 75 perches and Allowance
of six p Cent for Roads &c Surveyed August 15th 1797
in pursuance of a Warrant granted to George Woods dat-
ed the twentieth day of June 1770.

of Sam^l Lyon D.S.

To Daniel Brodhead Esquire
Surveyor General of Pennsylvania }

N.B. The above is part of a larger tract containing 258^{ac} 32^p & all^{ce}
Returned in pursuance of the same warrant }

of Order of D.B. Esq^r S.G.
W^m Parker.

IN TESTIMONY that the above is a copy of the original remaining on file in
the Department of Internal Affairs of Pennsylvania, made
conformably to an Act of Assembly approved the 16th day of
February, 1833, I have hereunto set my Hand and caused
the Seal of said Department to be affixed at Harrisburg,
this twenty seventh day of May 1907.

Henry Howell
Secretary of Internal Affairs.